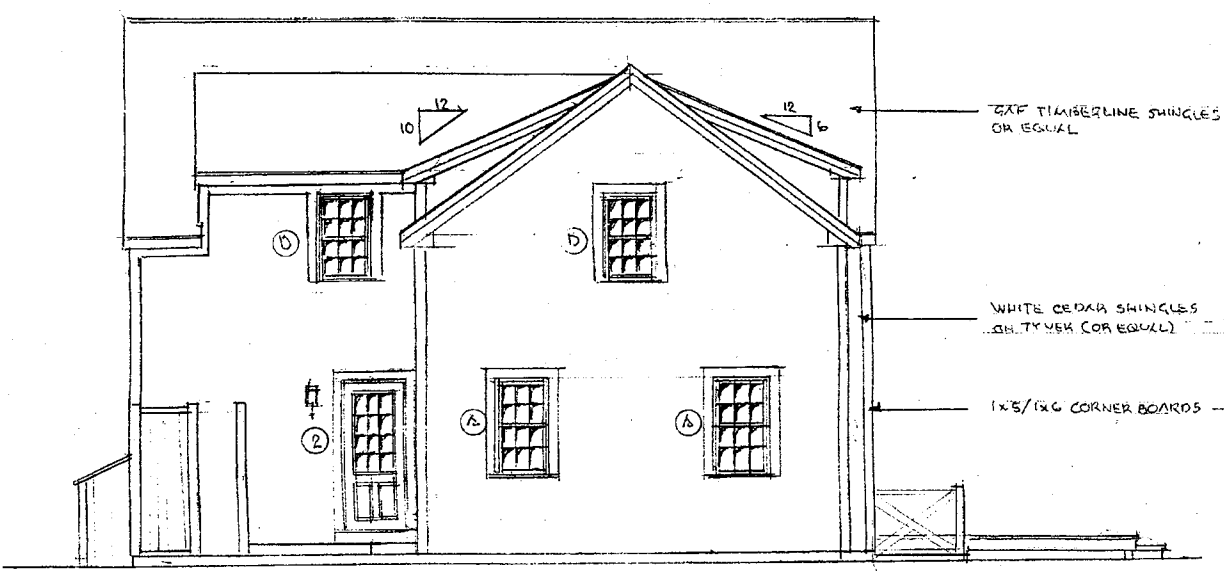


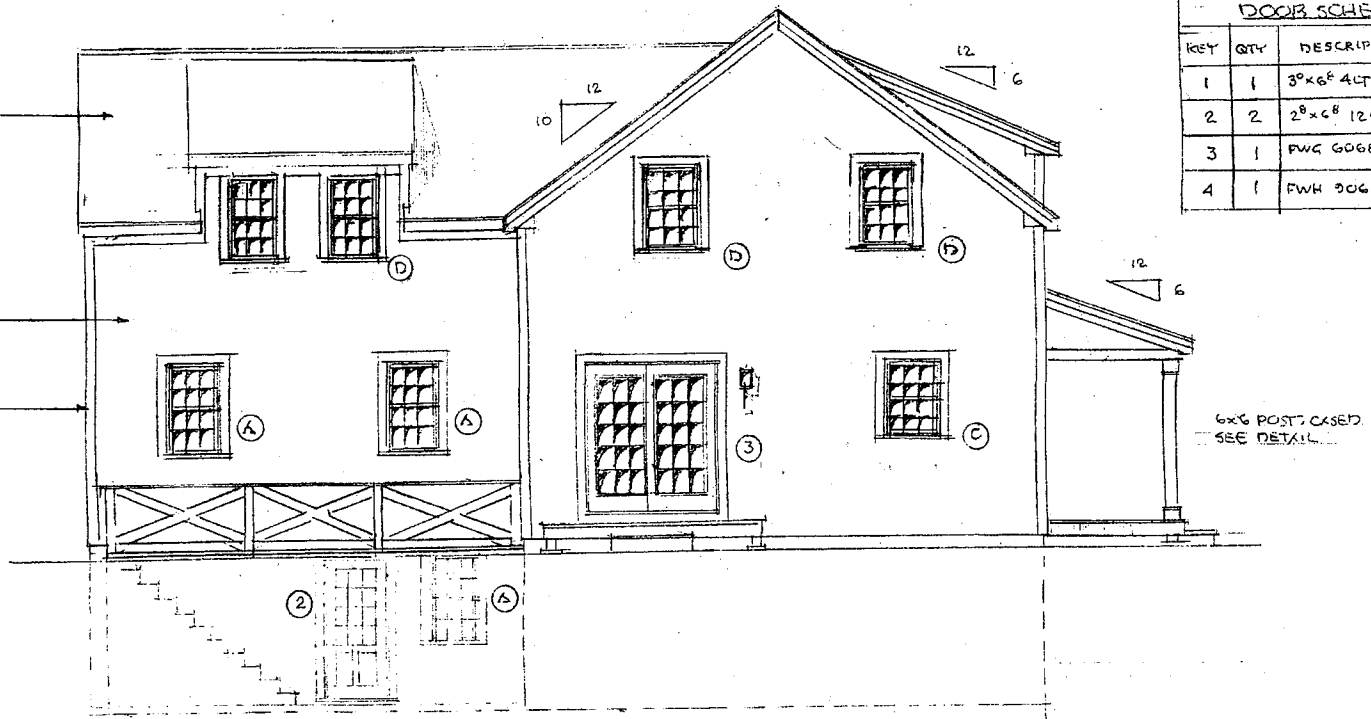
WINDOW SCHEDULE		
KEY	QTY	DESCRIPTION
A	10	TW 2446 W/ 6/6
B	3	TW 2426 MULLION W/ STUD POCKET
C	2	TW 2436 W/ 6/6
D	13	TW 2442 W/ 6/6

NOTE:
ANDERSON 300 SERIES
WINDOWS + DOORS

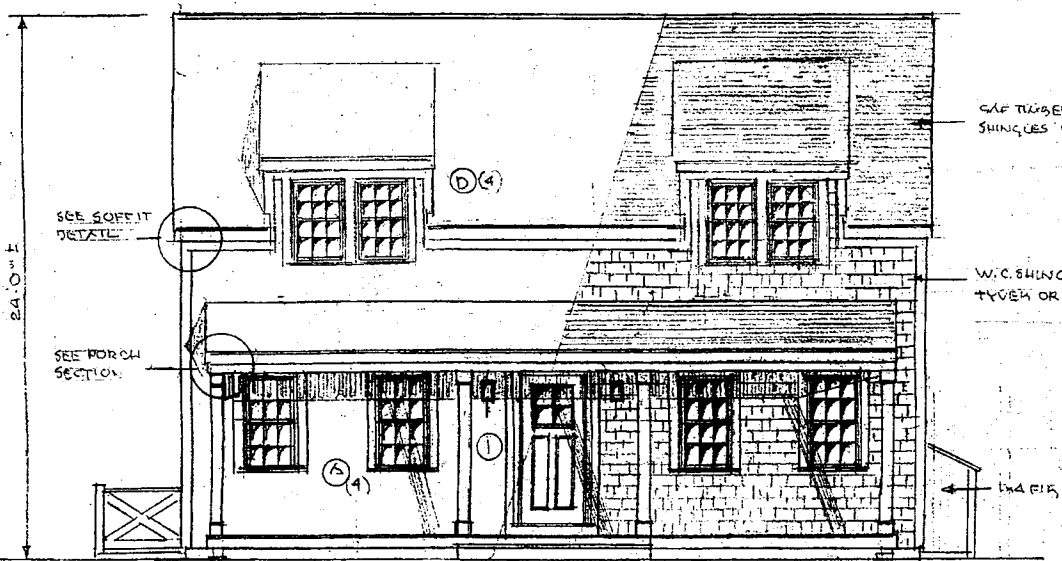
DOOR SCHEDULE		
KEY	QTY	DESCRIPTION
1	1	3'0" x 6' 4" LT STL
2	2	2'8" x 6' 12" LT STL
3	1	FWC 6068
4	1	FWH 3068



REAR ELEVATION WEST

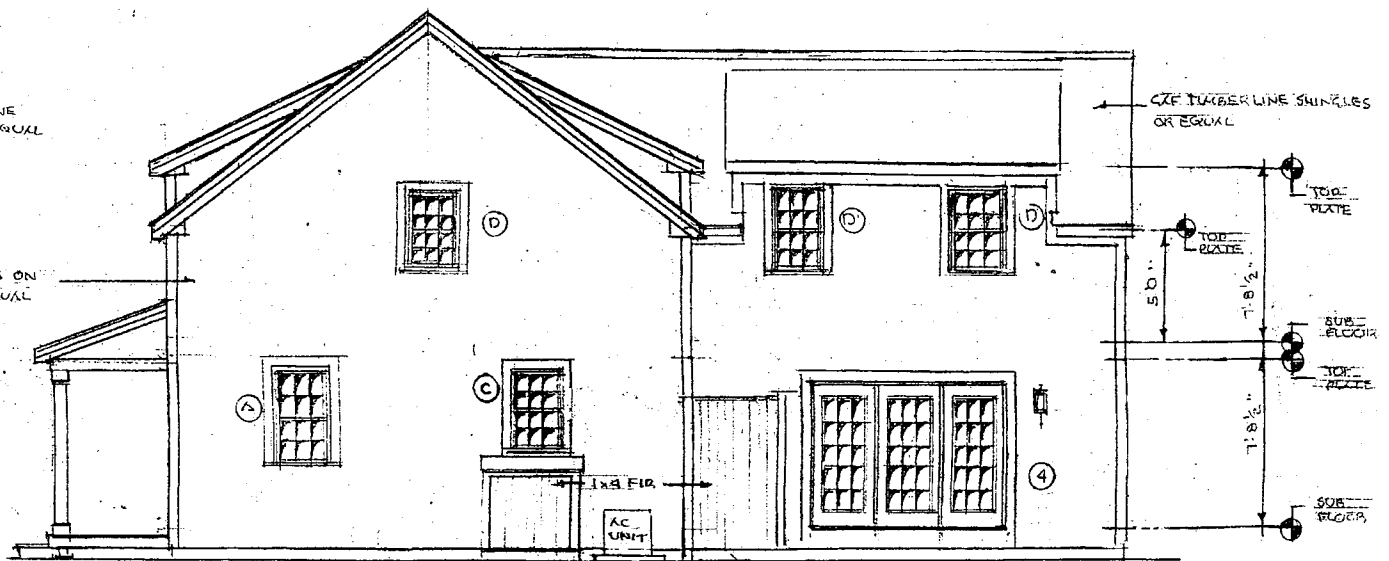


LEFT ELEVATION SOUTH



FRONT ELEVATION EAST

NOTE:
1x5 OR 1x10 DOOR TRIM



RIGHT ELEVATION NORTH

(TRASH BIN) (SHOWER)

ADDITIONS & ALTERATIONS
8 SCONSET, AVE.
NANTUCKET, MA.

SCALE: 1/4" = 1'-0"
JUN 20 2005

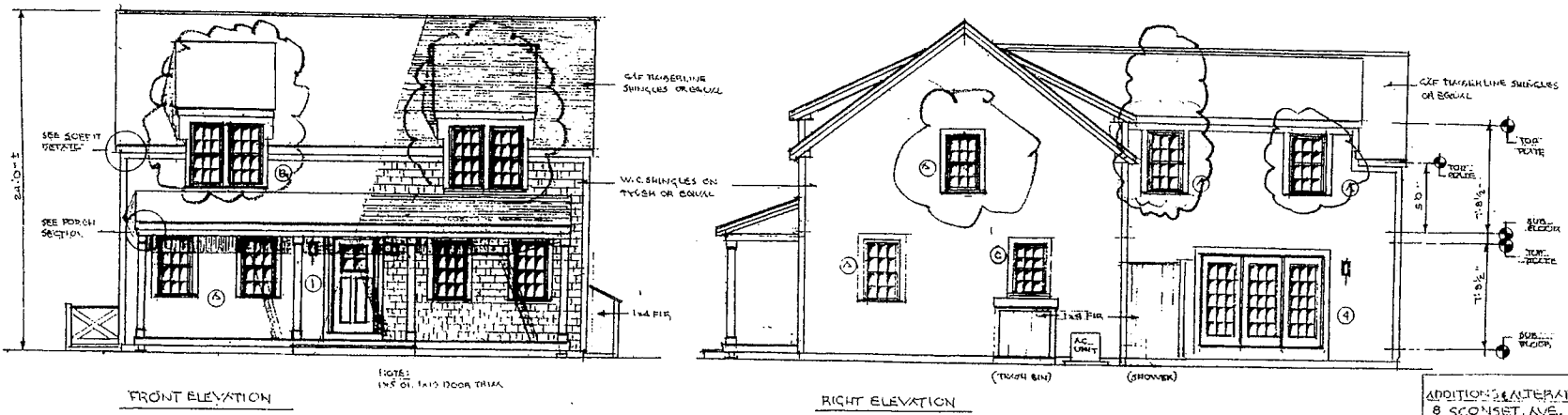
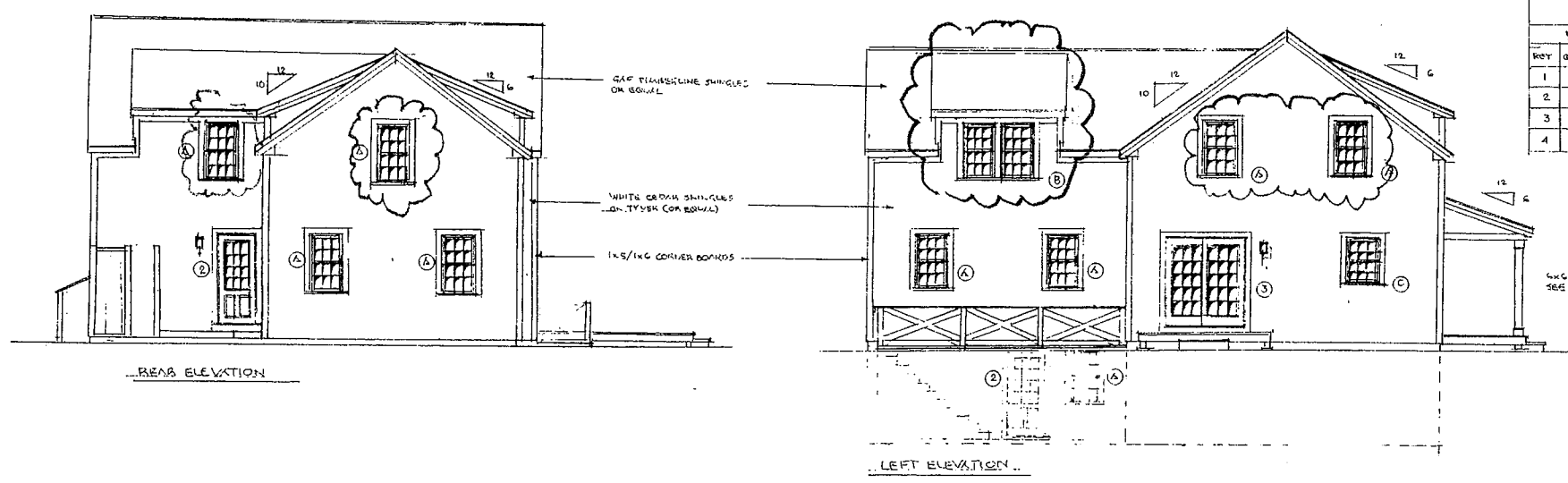
ARCHITECTURAL SERVICES
774-322-5105
BRUCE WAYNE DEVLIN
DESIGN

WINDOW SCHEDULE		
KEY	QTY	DESCRIPTION
A	17	24" x 36" W/ 6/6
B	3	24" x 36" W/ 12/12
C	2	24" x 36" W/ 6/6

NOTES:
 1. ALL WINDOWS TO BE 1/2" SET IN
 2. ALL WINDOWS TO BE 1/2" SET IN

DOOR SCHEDULE		
KEY	QTY	DESCRIPTION
1	1	3'6" x 6'4" SL
2	2	2'6" x 6'4" 12/12 SL
3	1	PWC GLASS
4	1	PWH DOOR

6" x 6" POST CASED
 SEE DETAIL.



ADDITIONAL ALTERATIONS
 8 SCOMSET AVE.
 NAT. TO CHIT.

ARCHITECTURAL SERVICES
 7742-11-11
 BRUCE AND DRAVIN
 DESIGN



FRONT ELEVATION
 NOTE: 1" x 5" O.I. EX. DOOR TRIM
 / OPTION B /

EXIST ELEVATION



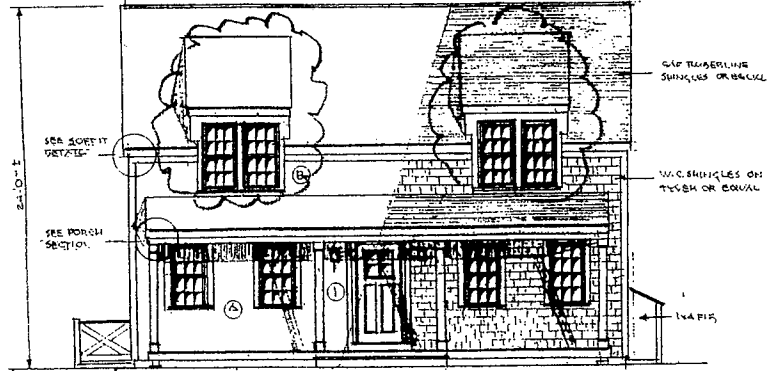
FRONT ELEVATION

NOTE:
1x5 ON 1x10 DOOR TRIM



FRONT ELEVATION

OPTION B

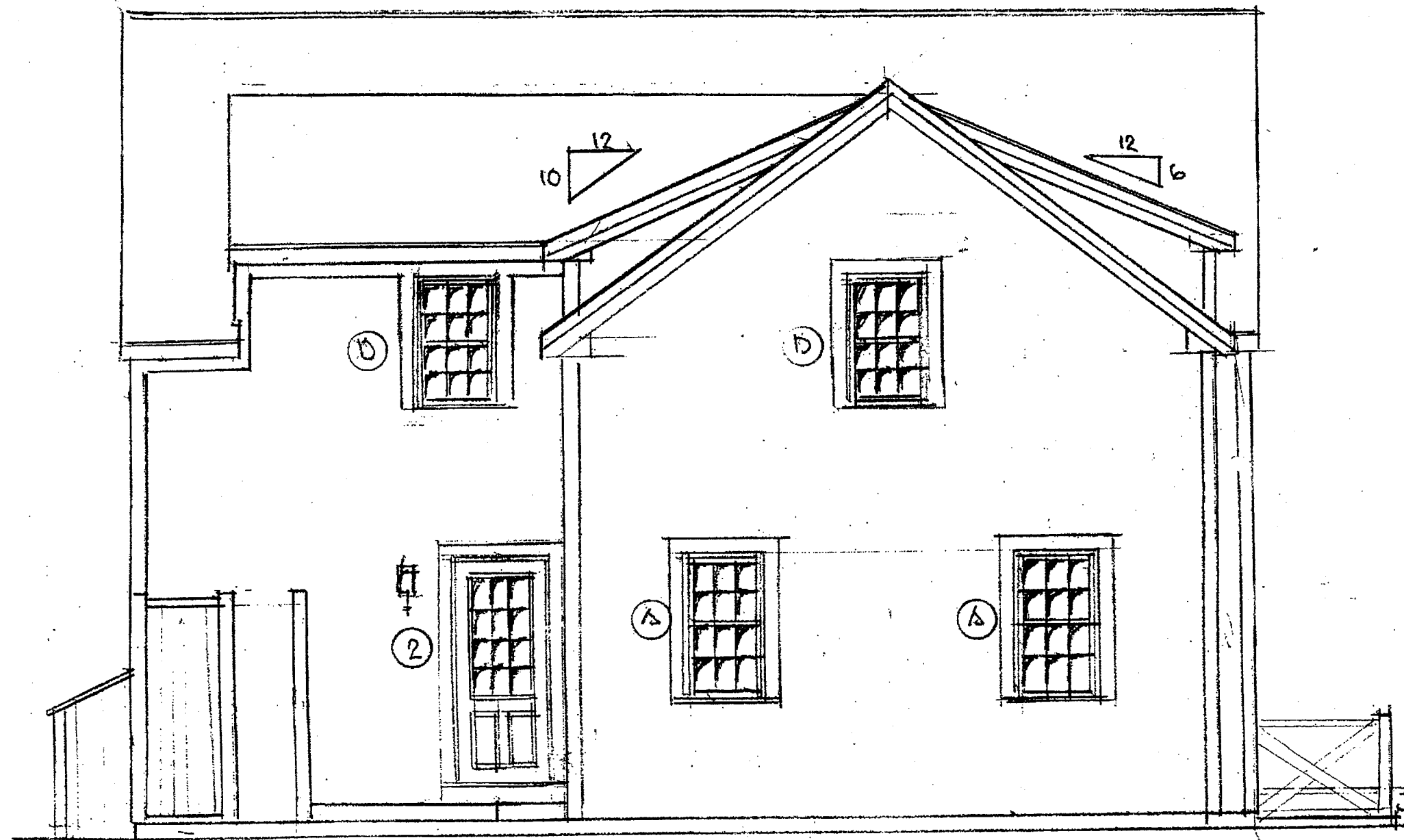


FRONT ELEVATION

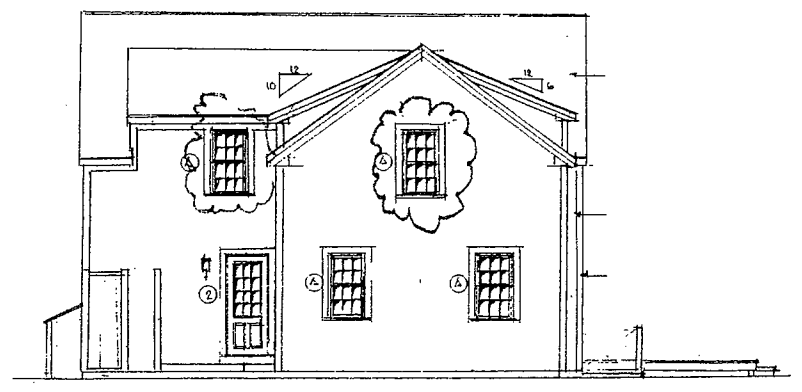
CHANGES

- REDUCED ALL SECOND FLOOR WINDOWS (WGT.) 2446 TO 2442
- WIDEN DORMERS THUS ELIMINATING SOLID CORNER BOARDS
- NOTE SEE OPTION B

WEST ELEVATION



REAR ELEVATION



REAR ELEVATION

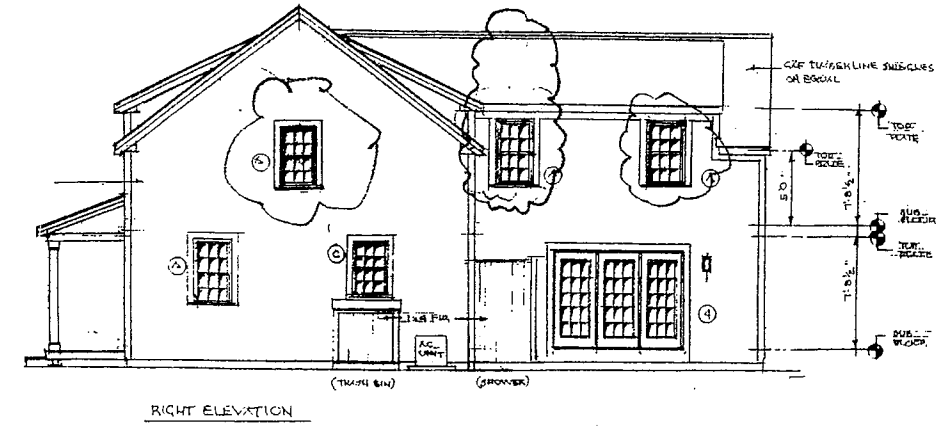
CHANGES

ALL SECOND STORY WINDOWS
REDUCED IN HGT. : 2446 TO 2442

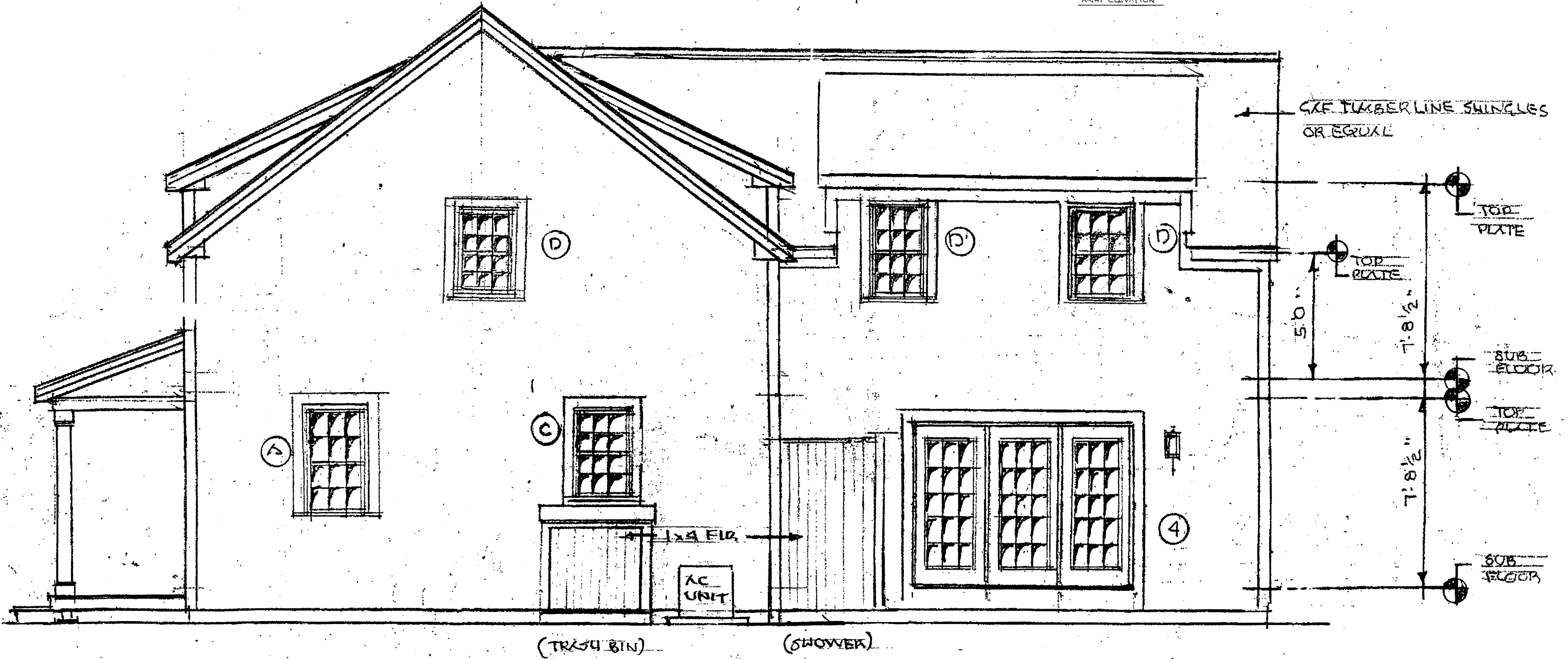
CHANGES

ALL SECOND STORY WINDOWS
 REDUCED IN HGT. 2446 TO 2442
 PULLED DORMER (A.S.UITE) FROM
 HOUSE DORMER 24"
 RIDGE DROP 8" FROM RIDGE

NORTH ELEVATION

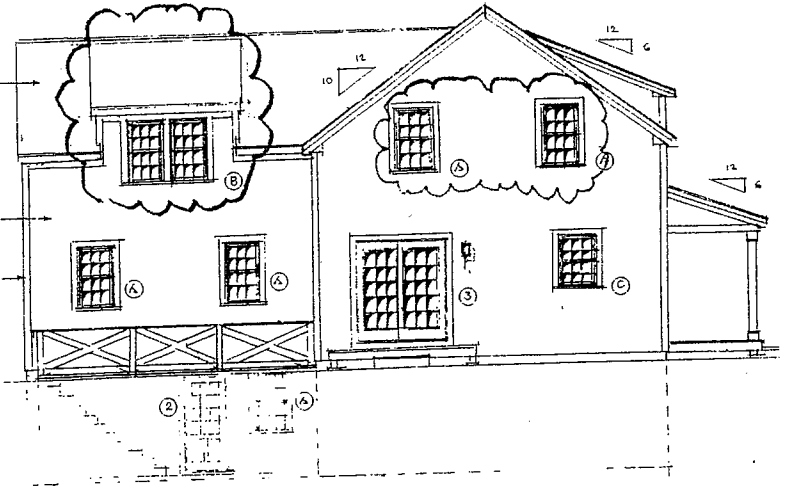
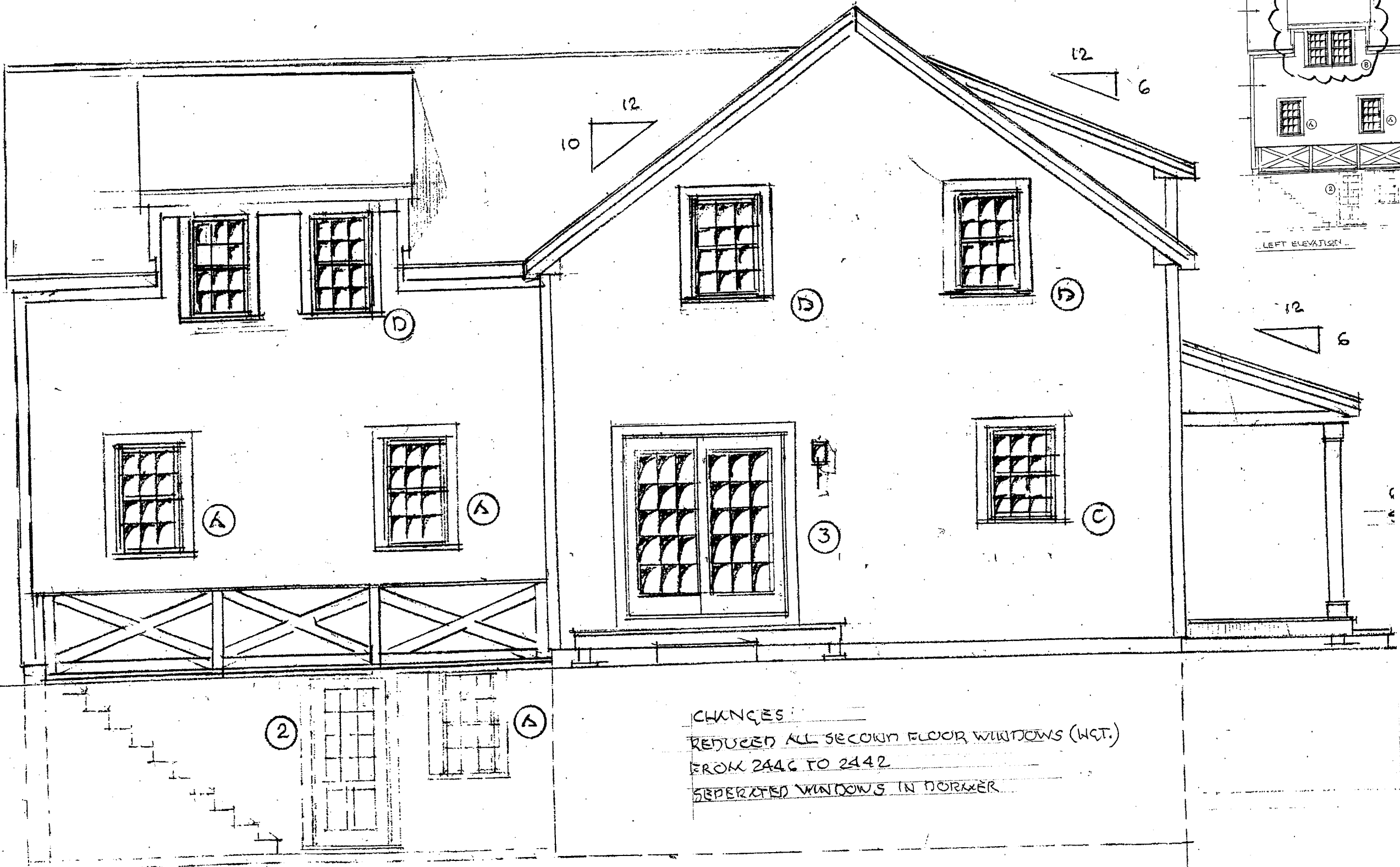


RIGHT ELEVATION



RIGHT ELEVATION

SOUTH ELEVATION



LEFT ELEVATION

CHANGES:
REDUCED ALL SECOND FLOOR WINDOWS (WST.)
FROM 2446 TO 2442
SEPERATED WINDOWS IN PORCH

LEFT ELEVATION