

# Island Grown Initiative Compost Program

Martha's Vineyard

# Island Grown Initiative Composter

Martha's Vineyard



Accepted  
Compostable  
Waste Items  
Island Grown  
Initiative  
Martha's Vineyard

## ITS A GO!

ALL Meat and Fish  
(including bones, lobster shells, egg shells)

ALL Dairy

Grains, nuts, seeds, flour products

Fruits and vegetables, all parts

Tea bags (staples removed)

coffee grounds and coffee filters

ALL flowers

Paper napkins and paper towels (it's fine if there are cleaning products on these, although if it's something very toxic that will not break down even at high heat, please throw in the trash)

## LIST OF ACCEPTED AND NOT ACCEPTED ITEMS IN IGI COMPOST:

## ITS A NO!

Large amounts of oyster, clam, little neck, mussel shells (for these items, please contact the Martha's Vineyard Shellfish Group (508-693-0391) who can recycle your shell!)

Fat/oil/grease (a little bit in the form of leftover prepared foods is fine. Things like a can of bacon grease, etc should go in the trash)

Compostable serviceware (\*\*IGI will be piloting this in August- stay tuned! We hope to be able to compost this in the future!)

PLASTIC of any kind

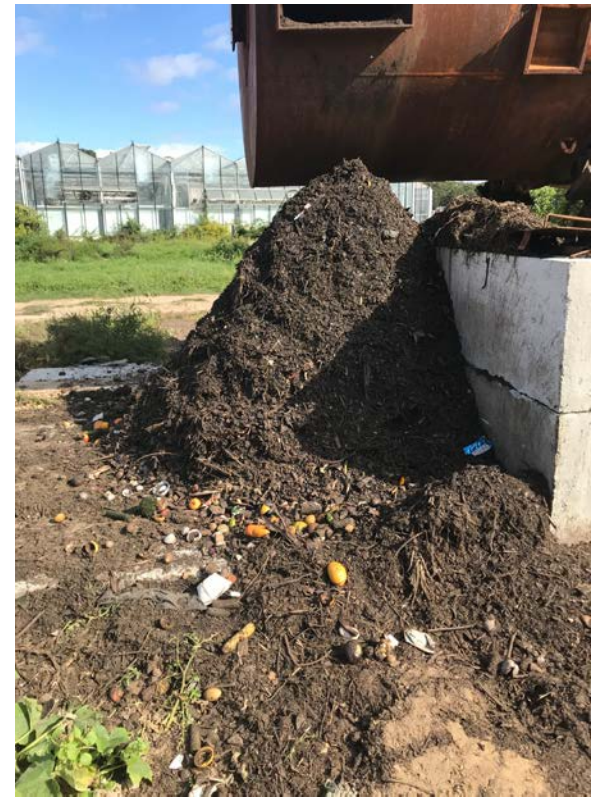
Other TRASH of any kind



# Compost Windrow

## Island Grown Initiative

Martha's Vineyard



# Food Waste Drop-Off Locations

## Island Grown Initiative

### Martha's Vineyard

