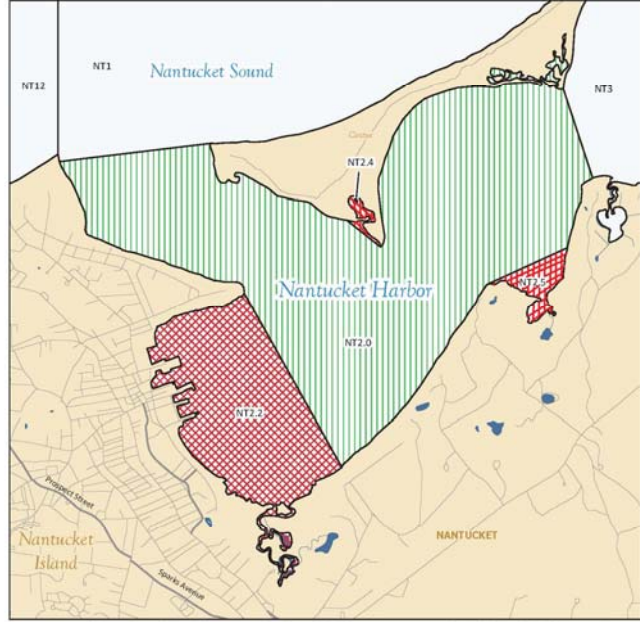

**Massachusetts**  
 Division of Marine Fisheries  
 SHELLFISH SANITATION AND MANAGEMENT

Growing Area Code: NT2  
 Area Name: NANTUCKET HARBOR WEST  
 Area Town(s): Nantucket

**Shellfish Area Classification**  
 Approved (Green vertical lines)  
 Conditionally Approved (Blue diagonal lines)  
 Restricted (Purple horizontal lines)  
 Conditionally Restricted (Yellow diagonal lines)  
 Prohibited (Red checkered pattern)

Produced: 10/03/2018



This map depicts the Marine Fisheries' sanitary classification of shellfish growing waters in accordance with the National Shellfish Sanitation Program. It does not indicate the current status, either "open" or "closed" to harvesting due to shellfish management or public health reasons. Always confirm the status with local authorities and/or Marine Fisheries. Information on this map may be out-dated or otherwise incorrect, and should not be relied upon for legal purposes.

Area of detail: Nantucket Harbor West

Legend:  
 Marsh/Wetland (Green wavy lines)  
 Saltmarsh (Green wavy lines)  
 Pond/Lake/Reservoir (Blue)  
 Town Boundaries (Dashed line)  
 Stream/Ditch/Canal (Blue line)

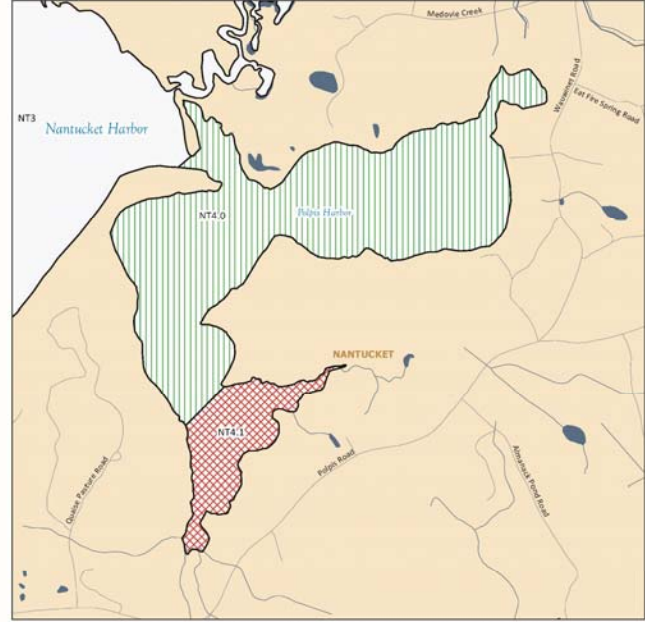
Scale: 0 to 1 mile


**Massachusetts**  
 Division of Marine Fisheries  
 SHELLFISH SANITATION AND MANAGEMENT

Growing Area Code: NT4  
 Area Name: POLPIS HARBOR  
 Area Town(s): Nantucket

**Shellfish Area Classification**  
 Approved (Green vertical lines)  
 Conditionally Approved (Blue diagonal lines)  
 Restricted (Purple horizontal lines)  
 Conditionally Restricted (Yellow diagonal lines)  
 Prohibited (Red checkered pattern)

Produced: 7/1/2013

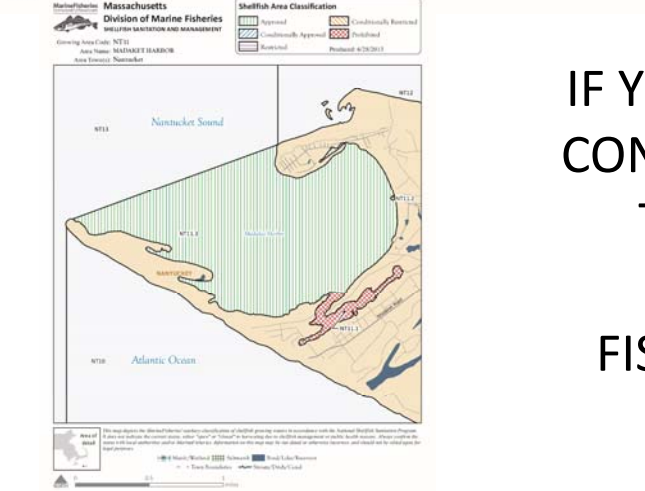


This map depicts the Marine Fisheries' sanitary classification of shellfish growing waters in accordance with the National Shellfish Sanitation Program. It does not indicate the current status, either "open" or "closed" to harvesting due to shellfish management or public health reasons. Always confirm the status with local authorities and/or Marine Fisheries. Information on this map may be out-dated or otherwise incorrect, and should not be relied upon for legal purposes.

Area of detail: Polpis Harbor

Legend:  
 Marsh/Wetland (Green wavy lines)  
 Saltmarsh (Green wavy lines)  
 Pond/Lake/Reservoir (Blue)  
 Town Boundaries (Dashed line)  
 Stream/Ditch/Canal (Blue line)

Scale: 0 to 500 feet




**Massachusetts**  
 Division of Marine Fisheries  
 SHELLFISH SANITATION AND MANAGEMENT

Growing Area Code: NT5  
 Area Name: HEAD OF THE HARBOR  
 Area Town(s): Nantucket

**Shellfish Area Classification**  
 Approved (Green vertical lines)  
 Conditionally Approved (Blue diagonal lines)  
 Restricted (Purple horizontal lines)  
 Conditionally Restricted (Yellow diagonal lines)  
 Prohibited (Red checkered pattern)

Produced: 10/25/2017



This map depicts the Marine Fisheries' sanitary classification of shellfish growing waters in accordance with the National Shellfish Sanitation Program. It does not indicate the current status, either "open" or "closed" to harvesting due to shellfish management or public health reasons. Always confirm the status with local authorities and/or Marine Fisheries. Information on this map may be out-dated or otherwise incorrect, and should not be relied upon for legal purposes.

Area of detail: Head of the Harbor

Legend:  
 Marsh/Wetland (Green wavy lines)  
 Saltmarsh (Green wavy lines)  
 Pond/Lake/Reservoir (Blue)  
 Town Boundaries (Dashed line)  
 Stream/Ditch/Canal (Blue line)

Scale: 0 to 1 mile

**CURRENT  
 SHELLFISH  
 CLOSURES TO  
 ALL SHELLFISH**

IF YOU HAVE QUESTIONS OR  
 CONCERNS PLEASE CONTACT  
 THE MASSACHUSETTS  
 DIVISION OF MARINE  
 FISHERIES (508) 990-2860